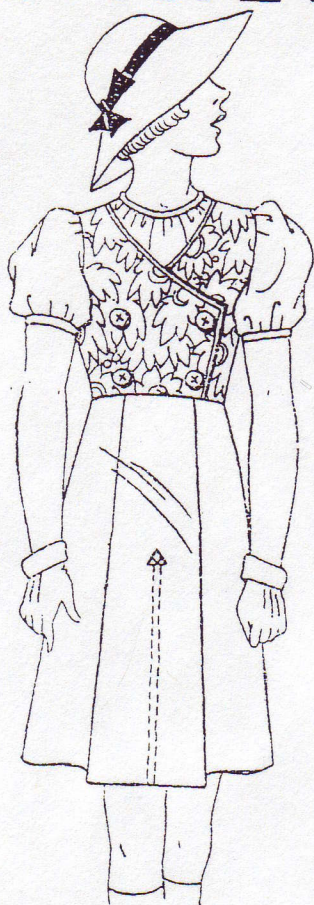


LA JUPE DE L'ENSEMBLE DE BLEUETTE.



Here is a charming skirt that goes to the Ensemble for the famous Bleuette , always in the latest style. It has soft fabric pleats in front, with top-stitching down the center as in the diagram

Cut back pattern piece on the fold. This skirt has a side closure. Also cut front pattern piece on the fold.

RST sew up the side seam that does not have the closure edge..

Press. According to the diagram on the pattern piece press pleats in on the front of skirt.pin in place. Hem the closure edges.

RST sew waistband to skirt. Turn the waistband back and tuck edge under and hand stitch the waistband closed to inside of skirt..

Sew the other side seam. Top stitch 2 rows up the front of the pleat and I embroidered a tiny triangle at the top of the top-stitching.

Measure skirt for where you want the hem and press in place. Sew hem in by hand and press. Attach a snap at the side for the closure.

note; there is a pattern piece on the original pattern sheet that I could not figure out.