

Bleuette
Circle
Skirt

CUT 1
ON FOLD

CB
Slash
for
opening

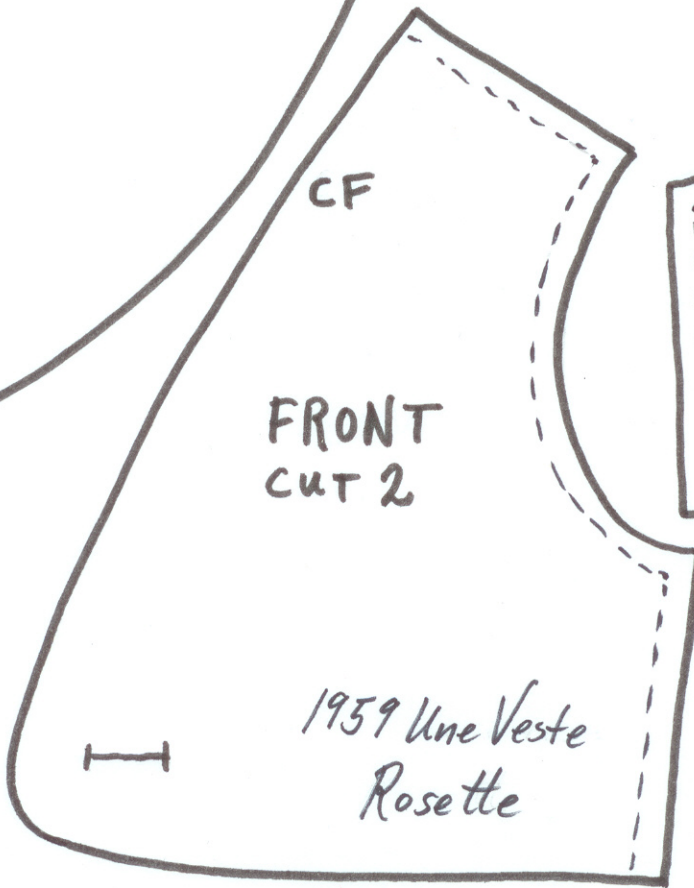
MWN



SLEEVE
CUT 2

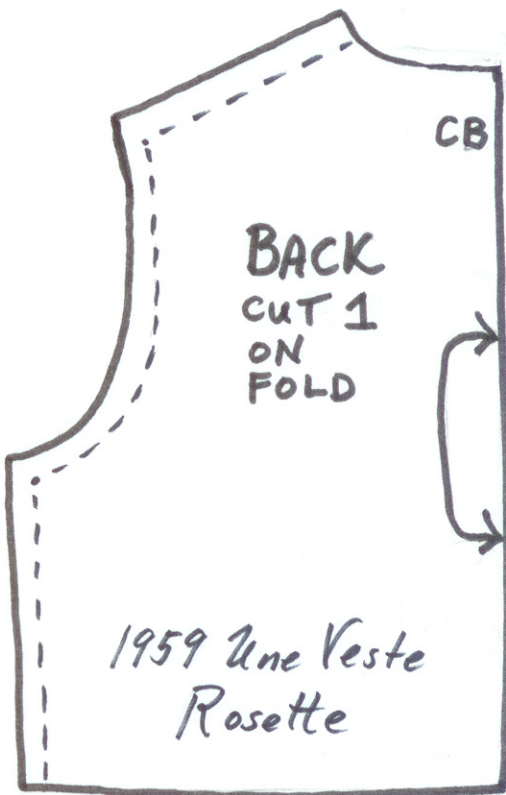
fold line

1959 Une Veste - Rosette



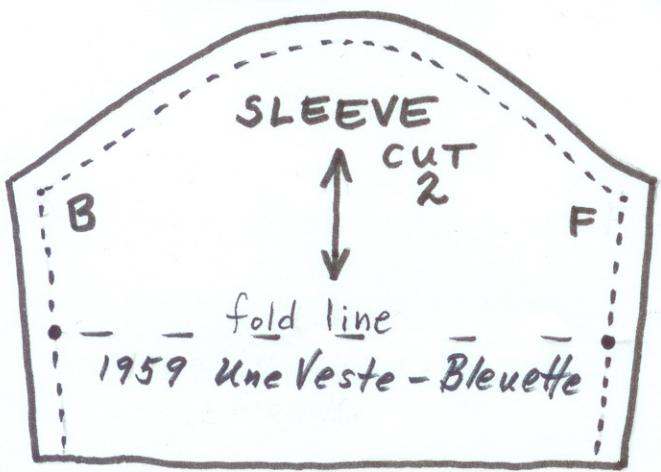
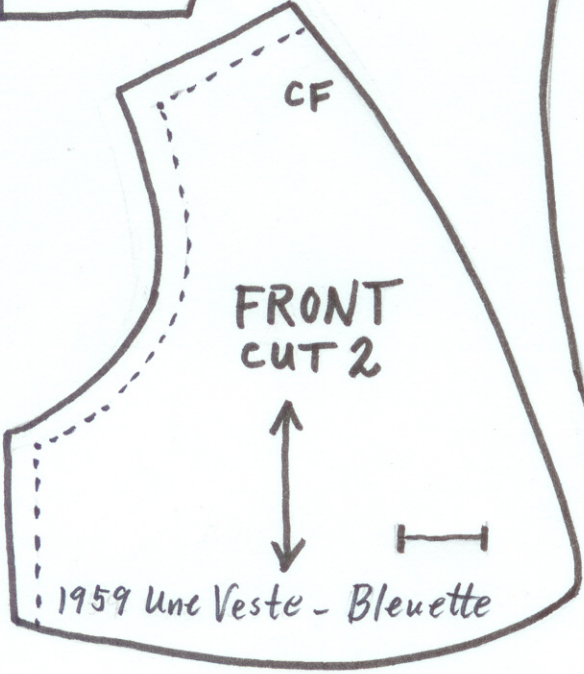
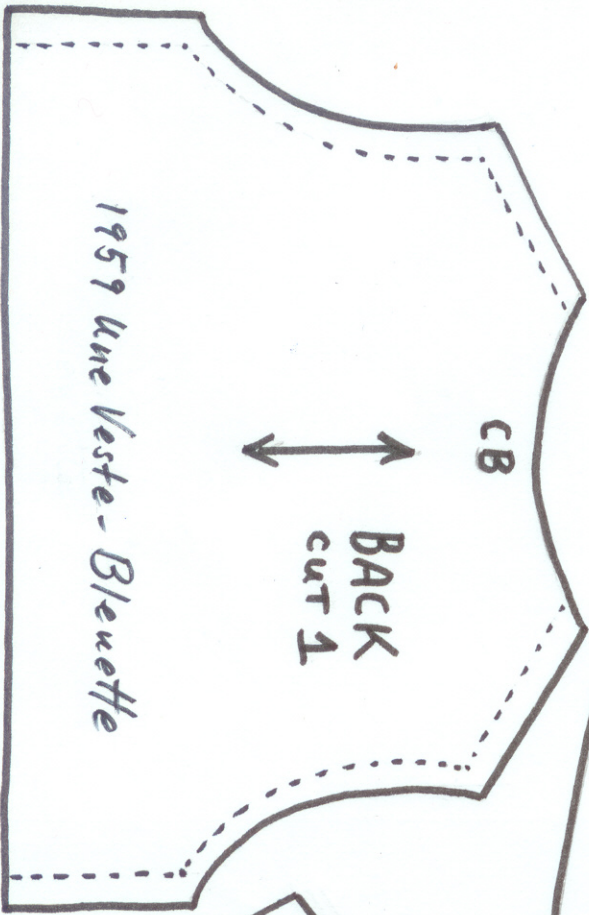
FRONT
CUT 2

1959 Une Veste
Rosette



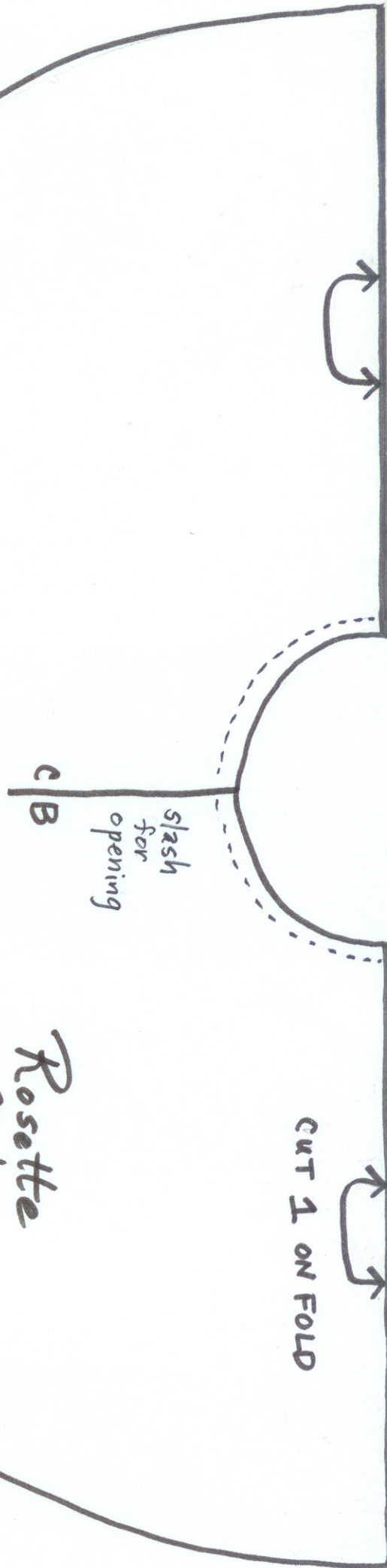
BACK
CUT 1
ON
FOLD

1959 Une Veste
Rosette

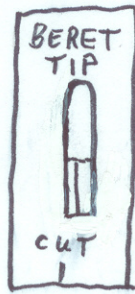
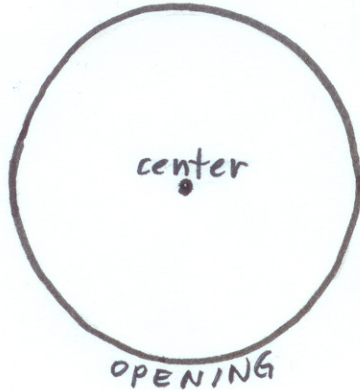


MWN

Rosette Circle Skirt



Bleuette
BERET
CUT 2



Rosette
BERET
CUT 2

MWN

