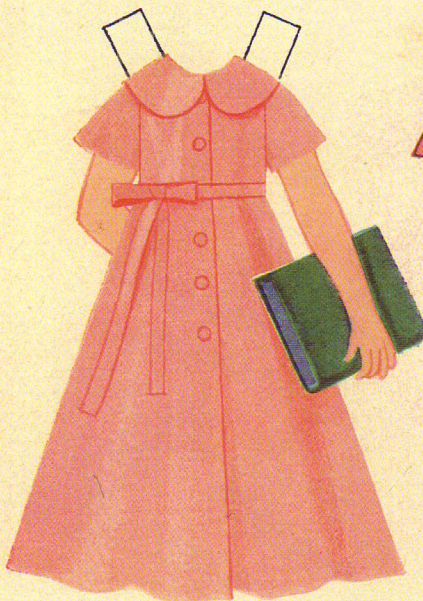
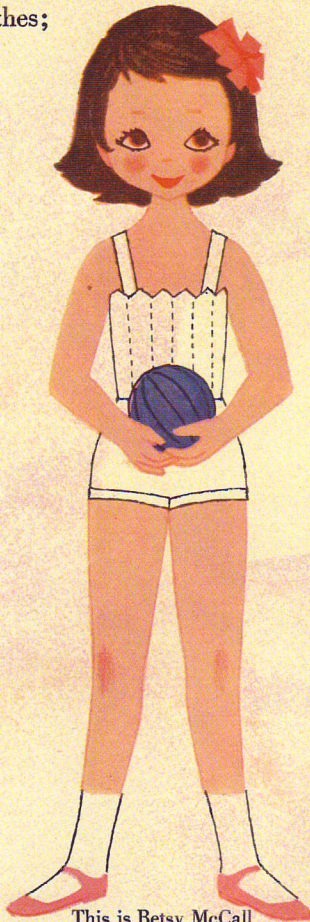


Betsy McCall

The new year comes, the old year goes
 And Betsy McCall just grows and grows.
 It's nice when Mother makes new clothes;
 Then dolly too gets some of those



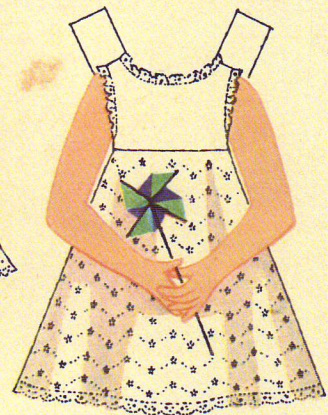
Betsy's housecoat is brand-new
 And her dolly has one too



This is Betsy McCall



Betsy goes to bed at night
 In a gown that's pink and white



This season petticoats are ample.
 Betsy's is a good example

To make these clothes:

Pretty and petite, all pink-and-white, Betsy's outfits were designed by Helen Lee, to be made from McCall's patterns in sizes 4 to 12.

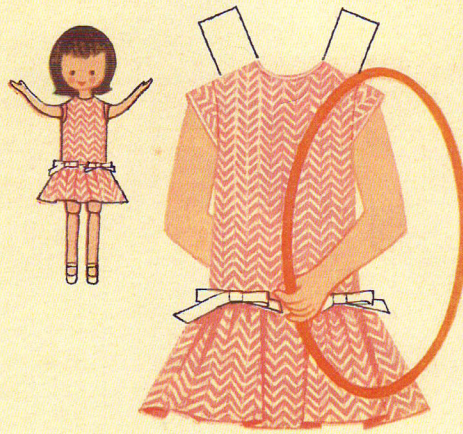
Nightie and robe, both waltz-length, are in one pattern, No. 4862. Lace-trimmed Empire nightie has a pink satin ribbon marking the high waistline. Robe to go with it is Empire too, with bell-shaped sleeves and a big collar. We used batiste for the nightie, cotton satin for the robe.

Party and daytime dresses, plus a trapeze slip to go under either, are in pattern No. 4864. Eyelet-embroidered Empire-style party dress is sashed with pink satin and trimmed with lace. Low-waisted daytime dress of a tapestry-type fabric has piqué bows, matching piping.

Doll clothes to match all five of Betsy's outfits are in pattern No. 2300. You can make them for an 8-inch or a 14-inch doll.



This party dress looks as enticing
 As a birthday cake with icing



A daytime dress is very pert
 With two bows sewn on the skirt