



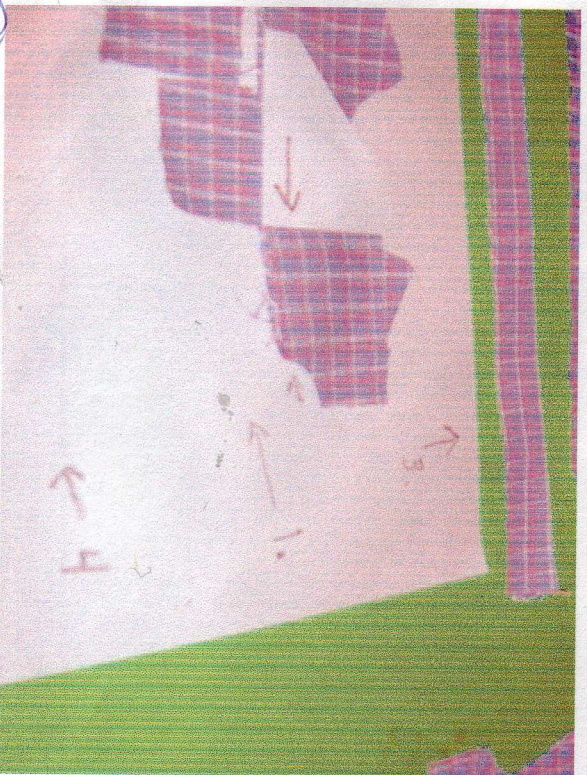
① 1955-56 Mascotte Dress (G.L.)
pink or blue plaid



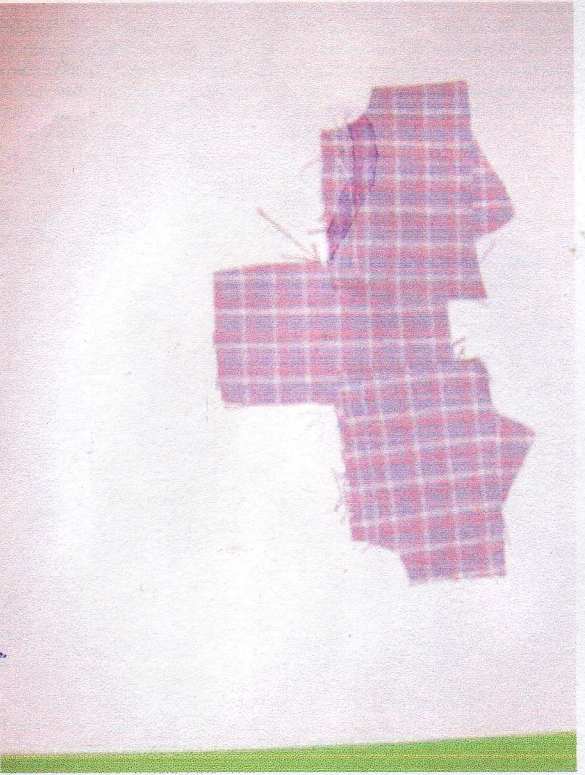
② These are the pieces.



③ Pocket flap - I have placed white paper under the flap to show where this will be placed.



④ #1 arrow is pointing to wear the bodice insert piece will go.



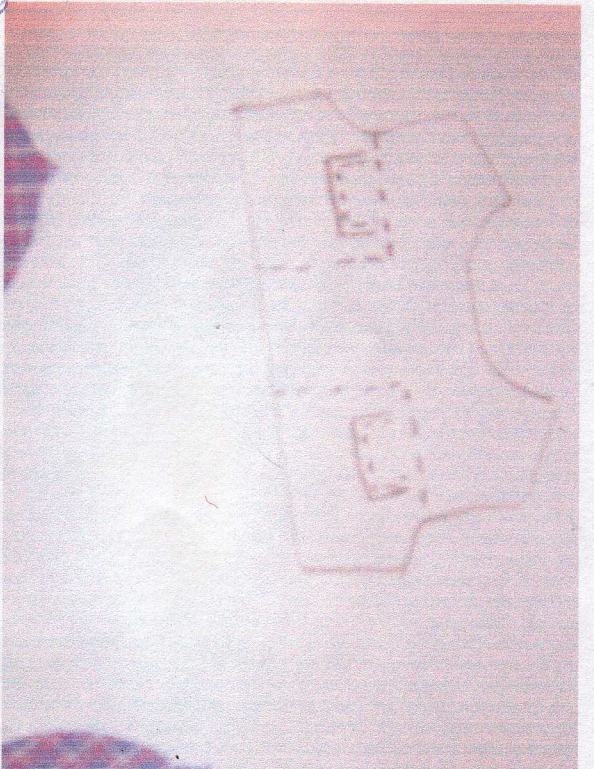
⑥ Front of bodice - After you have the folded and sewn each side of the "flaps", turn them right side out and press. Lay one on each side of bodice front and sandwich it between

the
bodice
front,
front
yolk
insert.

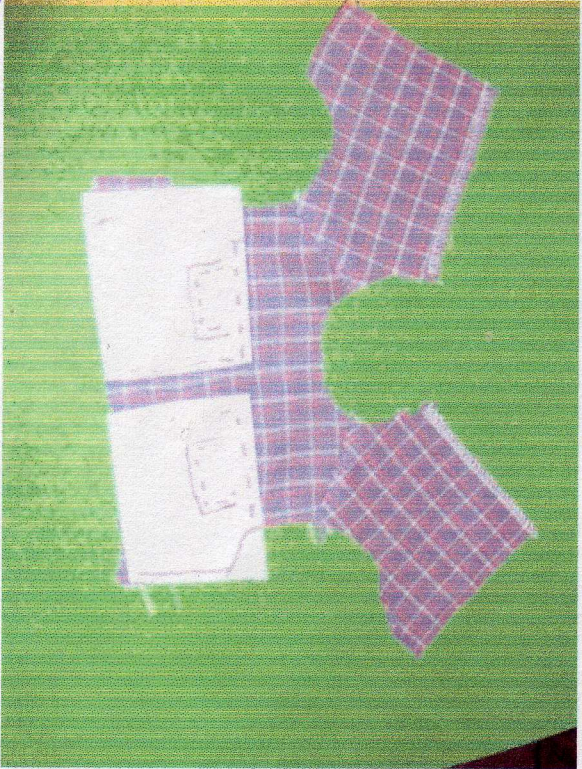


⑦ After you make a sm. clip place your needle in this corner & turn the insert piece to line up with bodice

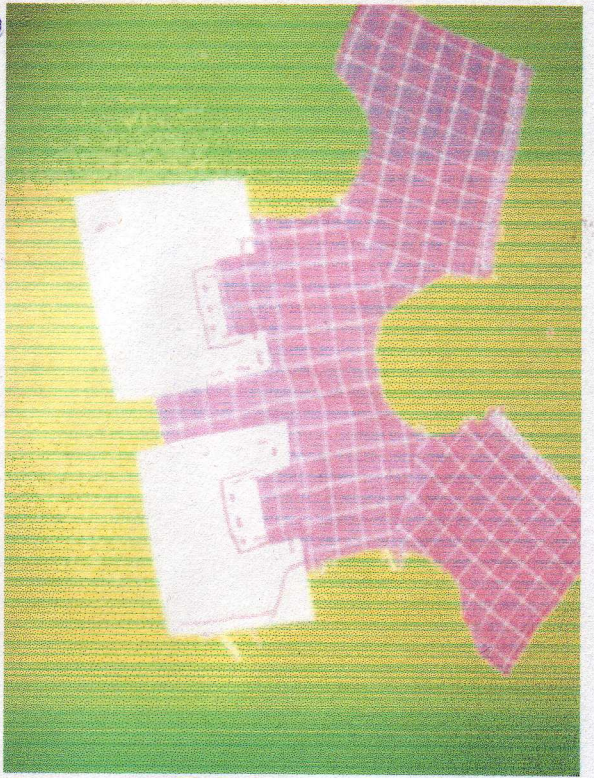
stitch



⑦ diagram - the flaps will be sewn into the seam here.



⑧ diagram
Also make a small hem @ back opening edges.



⑨ Flaps after being sewn.



⑩ Sew a gathering stitch along upper & lower edge of sleeve. Pull threads to fit.



⑪ Sew side seams. Then turn the cuff over the raw edge and turn it under. Hand sew this in place.



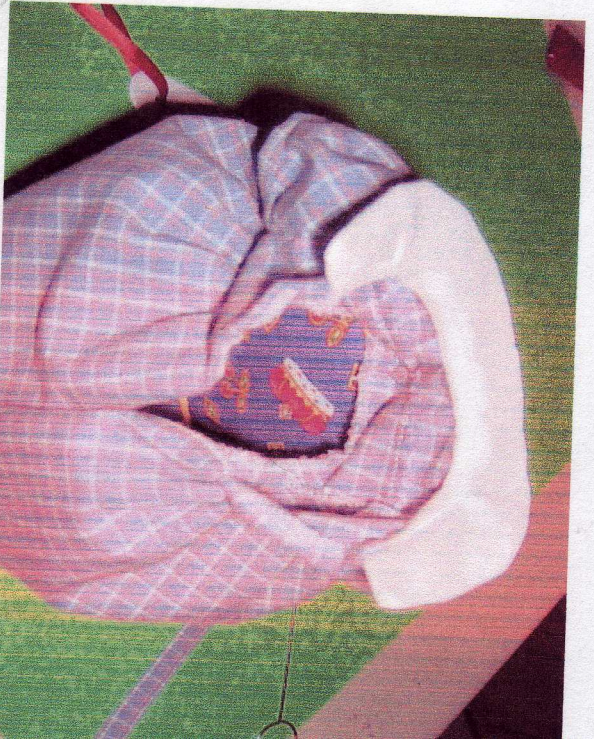
⑫ Sew a gathering stitch along upper edge of skirt. Match centers. Pst with bodice. Gather to fit. stitch.



13 On the back edge opening
turn the hemmed edge
over and stitch in place



14 Pin collar in place, baste



15 Turn under bias, hand
stitch in place



16 Stitch belt, turn right
side out and finish each
end. The End